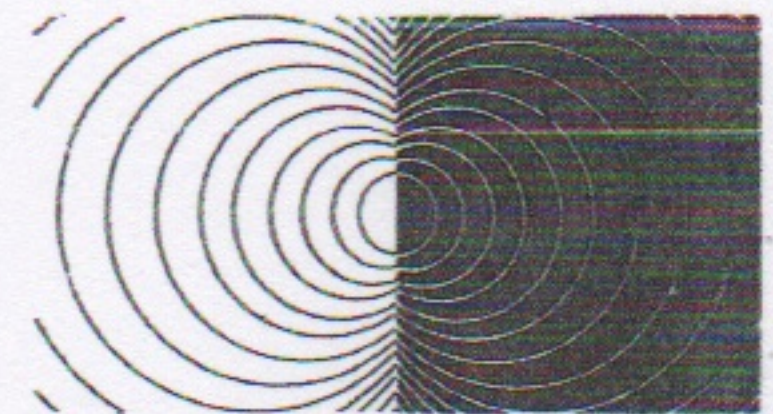


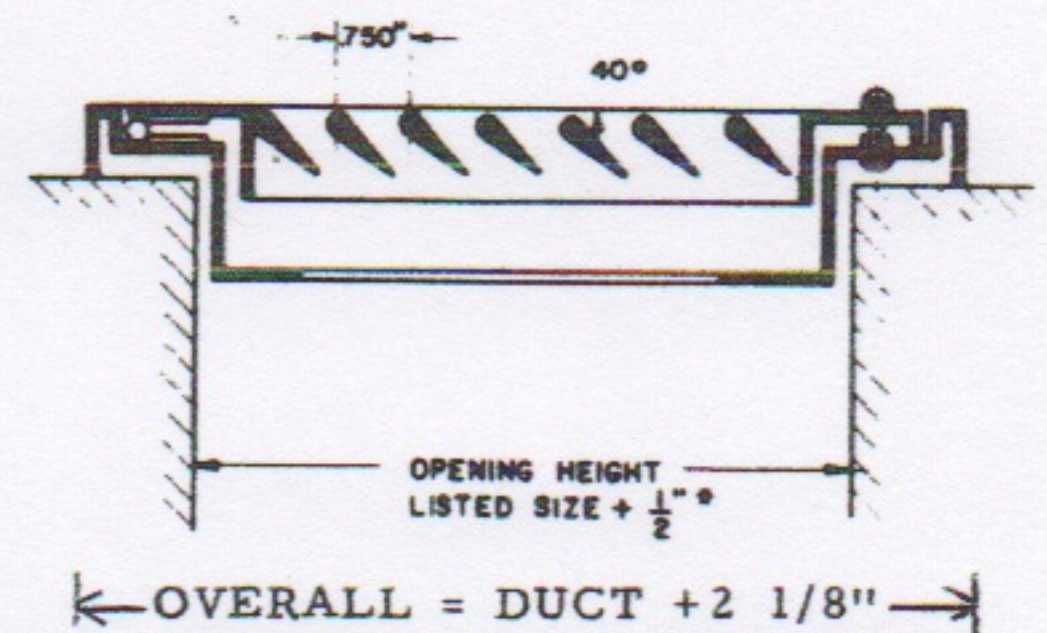
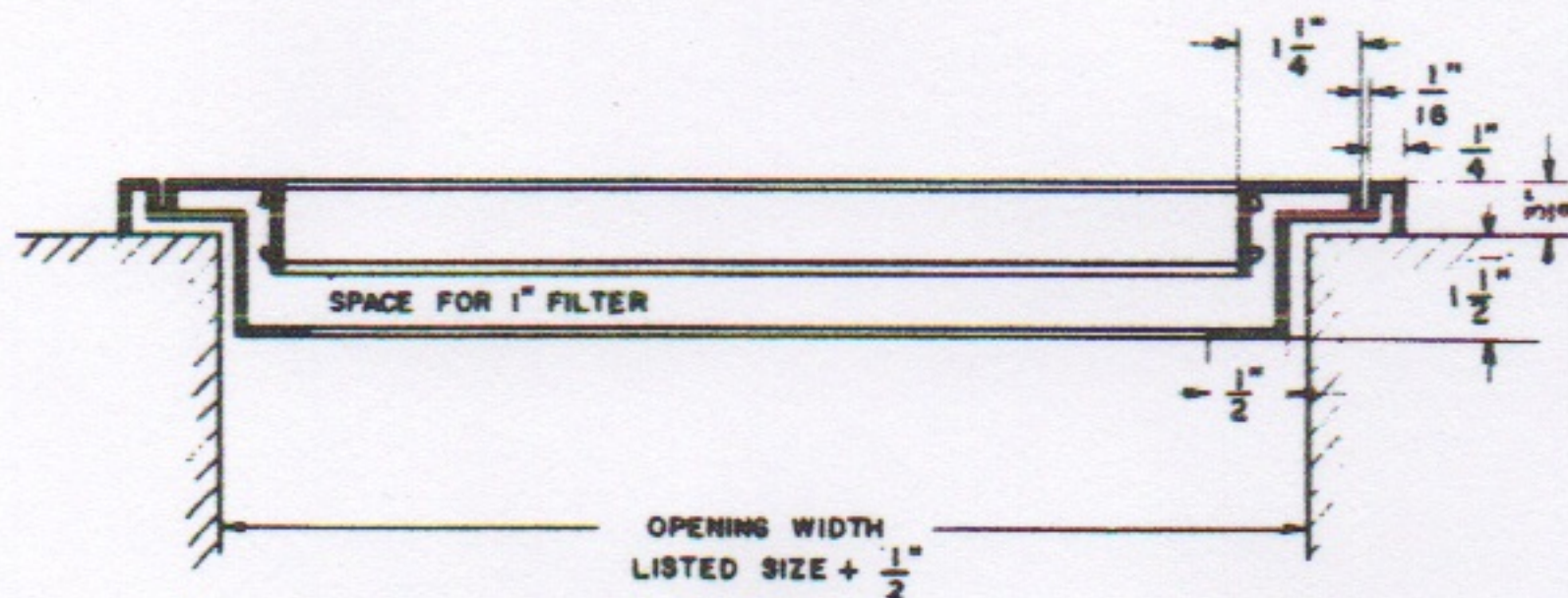
JOB
 LOCATION
 ARCHITECT
 ENGINEER
 CONTRACTOR



SPECIFICATION SHEET

RAH-FB - RETURN AIR GRILLE FILTER BACK

NOTE: WHEN SPECIAL DETAILS ARE REQUIRED, MAKE SKETCH SHOWING SPECIAL APPLICATION. APPROVED SUBMITTAL SHEET SHOULD ACCOMPANY ORDER.



RAHFB
 RAHFB 1/2
 RAHFBS

40° deflection, 3/4" spacing
 40° deflection, 1/2" spacing
 0° deflection, 3/4" spacing

OPTIONAL:
 Available with opposed
 blade damper.

DESIGN: Grillmaster's RAH-FB Series provides fixed blade settings for return air application. Filter back accepts standard 1" filters.

FEATURES: CORNER KEY construction ensures tightly closed mitre. Heavy, tempered blades of teardrop design.
 NYLON BUSHINGS prevent metal-to-metal contact.
 Concealed VINYL INSULATION behind mullion further prevents any metal-to-metal contact, assuring absolutely rattle-proof design.
 Complete mechanical assembly, no welds to break.
 STAINLESS STEEL hinges are used for extra strength.

CONSTRUCTION: Constructed entirely of aluminum extrusions throughout. .050" frame thickness. Natural aluminum, satin finish. Can be painted, if desired, without priming.

APPLICATION: The RAHFB Series is designed for normal return air application where volume control is desired.
 40° deflection units are standard.
 0° (straight) deflection units allow a higher than normal mounting height, retaining the "no-vision" feature from actual viewing levels.

NOTE: Duct size must be 1/2" to 3/4" larger than listed sizes. Filters are not furnished.

Grillmaster
 Inc.

835 Shepherd Avenue, Brooklyn, N. Y. 11208

MEMBER: AIR DIFFUSION COUNCIL